



HLL REFRIGERANT FLOAT SWITCH

INTRODUCTION

These Hansen refrigerant liquid level float switches (HLL Series) are used to electrically indicate or control a liquid level by opening or closing a SPDT switch. Their simple, reliable design provides long life performance for almost any application.

APPLICATIONS

These refrigerant liquid level float switches are typically installed on a vessel's liquid level column. They can control liquid level by controlling a liquid fill solenoid valve. Often, they are used to provide high level cut-out or alarm. In addition, they can be used to turn off a recirculating liquid pump if a low level occurs. Other applications include control of liquid level via a liquid exit solenoid valve, level indication via a pilot light, and transfer drum operation.

MATERIAL SPECIFICATIONS

Safe Working Pressure:
400 PSIG (27 bar)

Operating Temperature: -50F to +150F
(-45°C to +65°C)

Connections: 3/4" FPT / 1" Butt Weld combination

Specific Gravity: 0.57 to 1.70

Electrical Switch: 120V, 240V, 10 amp SPDT

Connection: 1/2" NPSM for conduit

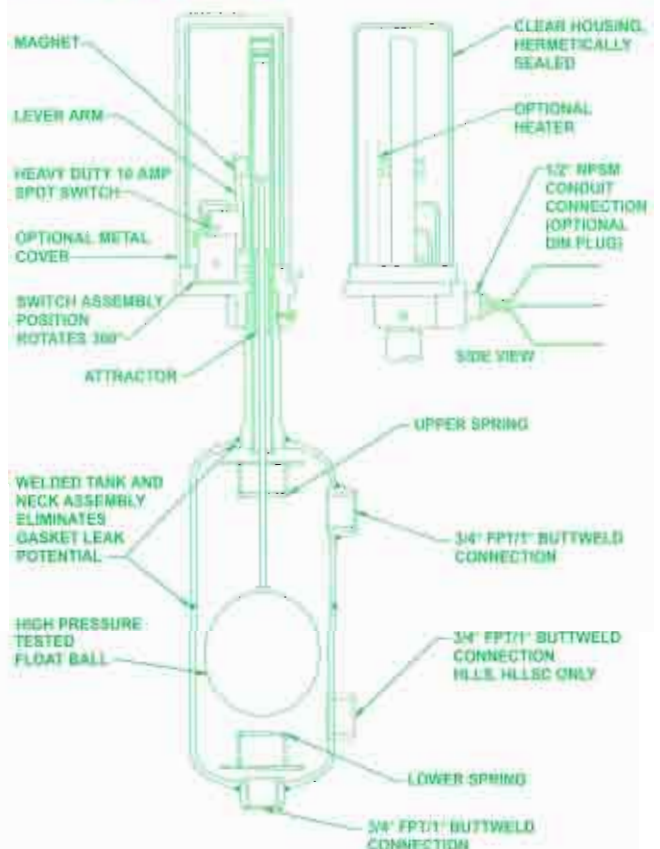
Specifications, Applications, Service Instructions & Parts

REFRIGERANT FLOAT SWITCHES

for Ammonia, R22, R134a and
Other Approved Liquids

ISO 9002

KEY FEATURES



ADDITIONAL FEATURES

Float switches as well as tank assemblies are exactly interchangeable with R/S LL Series float switches.

CSA/US Certified

