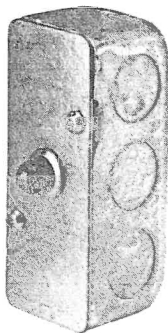
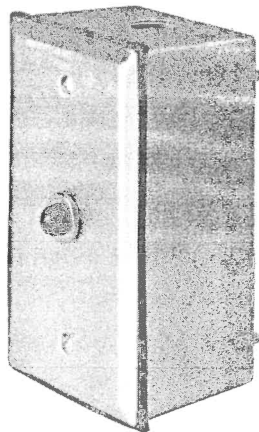


HANSEN TECHNOLOGIES CORPORATION



Standard Pilot
Light Assembly



Watertight Pilot
Light Assembly

INTRODUCTION

These bright, long-life pilot lights are usually installed throughout industrial refrigeration plants to indicate the operational status of electrical coils. They are used to show the ON or OFF status of solenoid valves or pressure regulators having electric shut-off or wide-opening features. These lights are often used by plant personnel when troubleshooting system problems.

Pilot lights with NEMA 1 boxes are standard. Watertight pilot lights with NEMA 4 boxes are available for wet conditions or outdoor use. These pilot light assemblies are easily connected to standard $\frac{1}{2}$ " fitting coil housings. Pilot lights are available in green, red or amber.

ADVANTAGES

Hansen pilot lights feature reliable neon lamps which have much greater expected life than incandescent lamps and require significantly lower operating current. Furthermore, neon lamps are more tolerant of vibration, shocks (such as valve opening/closing) and voltage transients than incandescent lamps. These pilot lights are powered by primary voltage; no special coils with secondary windings are necessary. Lamps are CSA and UL approved.

ORDERING INFORMATION

When ordering pilot light assemblies, please specify color of light (green, red or amber), voltage (115V or 230V) and with Standard NEMA 1 box or Watertight NEMA 4 Box. Special 24V pilot lights are available, contact factory.

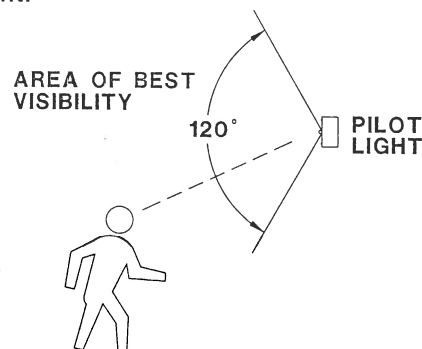
Specifications, Applications, Service Instructions & Parts

PILOT LIGHT ASSEMBLIES

for Use with
Electrical Solenoid Coils

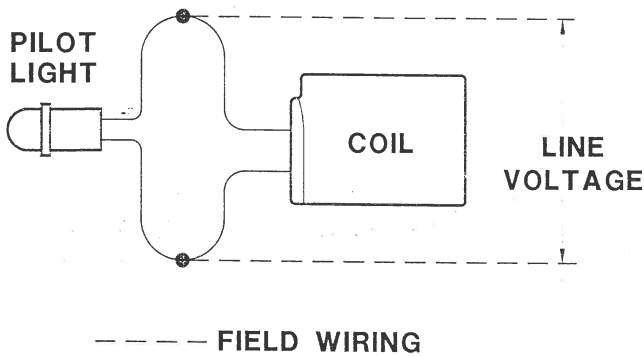
INSTALLATION

When installing pilot light assemblies, survey the surrounding room or space and determine the direction from which they will most likely be viewed. This "line of sight" will determine the best position for the pilot light and also which electrical knockouts on the box should be used. As a general rule, the area of best visibility is within 120° from the center of the light.



Before attempting to work with any electrical device, make sure that all power is safely removed from circuit and cannot be restored accidentally. To avoid potential bending or damaging of the solenoid tube, remove coil from valve before connecting box to coil housing and field wiring. Use supplied locknut and nipple to secure the NEMA 1 box to coil housing. The NEMA 4 box requires a $\frac{1}{2}$ " NPT fitting (not supplied). Place coil onto solenoid tube. Coil can be rotated 360° to facilitate wiring. See Wiring Diagram on page 2. Make all electrical connections per local and national electrical codes. Solenoid coil should only be energized while on solenoid tube; otherwise immediate coil burnout may occur.

WIRING DIAGRAM

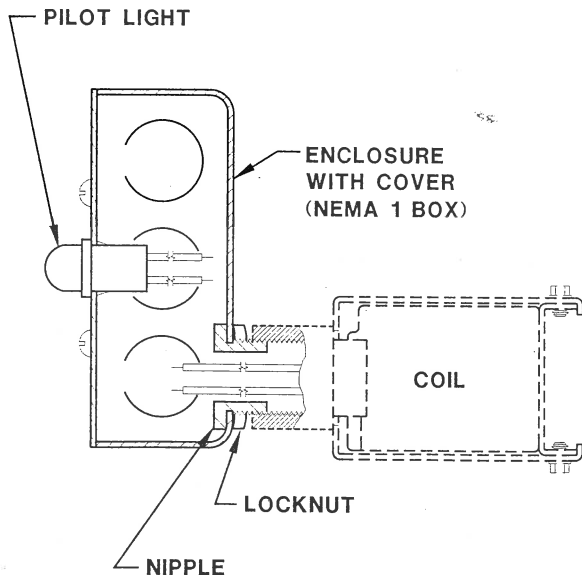


SERVICE AND MAINTENANCE

If coil or pilot light is suspected of not working, first check fuses, circuit breakers, control relays and switches leading to coil to be sure they are working properly and that power is reaching the coil. Be sure line voltage is within 85% to 110% of marked coil rated voltage.

Energize the coil; a single metallic "click" signifies the coil is working, and pilot light should be lit. If not, disconnect electrical power and isolate coil and pilot light from field wiring. Check for good wiring continuity at splice (wiring nut) leading from the two power leads and the leads coming from the pilot light and the coil. If all seems good, replace light; see Parts List section for replacement part numbers.

TYPICAL APPLICATION



PARTS LIST

Pilot Light Assembly	Color	Rated Voltage	Pilot Light Part No.
Standard (NEMA 1)	Green	115V 230V	70-0101 70-0104
	Red	115V 230V	70-0124 70-0261
	Amber	115V 230V	70-0102 70-0105
Watertight (NEMA 4)	Green	115V 230V	35-0194 35-0191
	Red	115V 230V	35-0195 35-0192
	Amber	115V 230V	35-0196 35-0193

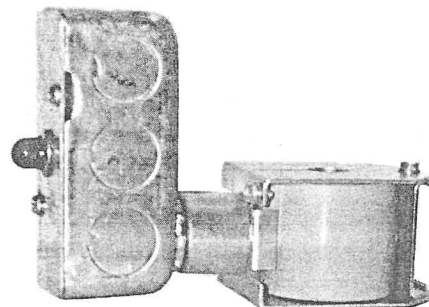
Prior to mid 1996, watertight pilot lights used LED lamps; contact factory for replacement lamps.

CAUTION

These instructions and related safety precautions must be read completely and understood before selecting, using, or servicing these pilot lights. Only knowledgeable, trained electricians and refrigeration mechanics should install, operate, or service these pilot lights. Valve components (except electrical solenoid coil) should not be removed unless system has been evacuated to zero pressure. See also Safety Precautions in current List Price Bulletin and Safety Precautions Sheet supplied with product. Escaping refrigerant can damage the eyes, lungs, or other bodily parts.

WARRANTY

Hansen electrical and electronic parts are guaranteed against defective materials and workmanship for 90 days F.O.B. our plant. All other components are guaranteed for one year F.O.B. our plant. No consequential damages or field labor is included.



Standard Pilot Light Assembly
(shown with 1/2" fitting coil)

HANSEN TECHNOLOGIES CORPORATION

6827 High Grove Boulevard
Burr Ridge, Illinois 60521 U.S.A.
Telephone: (630) 325-1565
Toll-free: 1-800-426-7368
FAX: (630) 325-1572