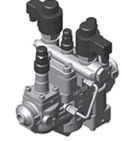


COMMON  
P3  
CONFIG.

## MVP IDENTIFICATION GUIDE



SOLENOID



SD  
TWO-STEP SOLENOID



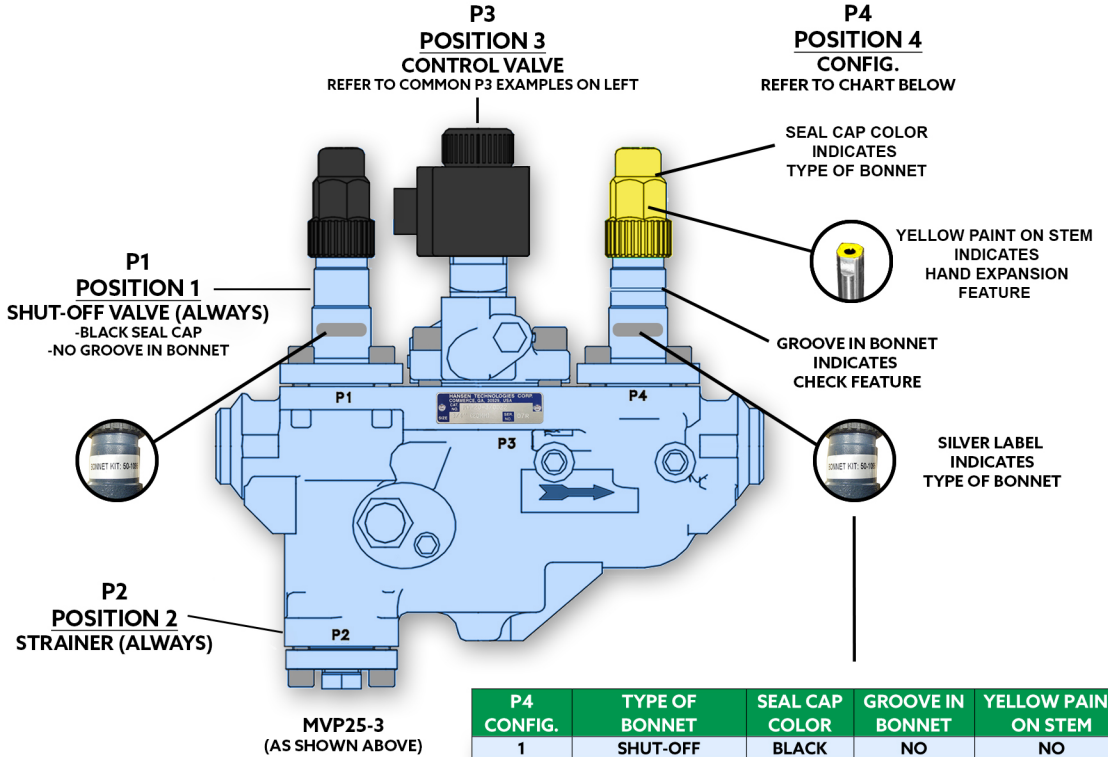
A  
PRESSURE REGULATOR



AS  
ELECTRIC SHUT-OFF

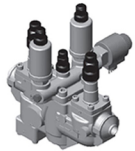


AB  
ELECTRIC WIDE  
OPENING



P4 CONFIG.	TYPE OF BONNET	SEAL CAP COLOR	GROOVE IN BONNET	YELLOW PAINT ON STEM
1	SHUT-OFF	BLACK	NO	NO
2	HAND EXPANSION	YELLOW	NO	YES
3	STOP-CHECK / HEV	YELLOW	YES	YES
4	STOP-CHECK	GREEN	YES	NO
5	CHECK	FLAT COVER IN P4		
6	BLANK	COVER IN P4 WITH RAISED HEX PATTERN ON TOP		
7	MCV	MOTORIZED CONTROL VALVE IN P4		

## NAME PLATE CODING



AD  
DUAL REGULATOR



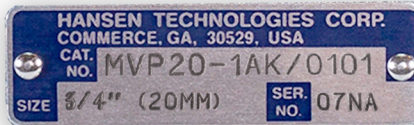
AO  
OUTLET PRESSURE  
REGULATOR



MCV  
MOTORIZED  
CONTROL VALVE



AK  
RESEATING RELIEF  
REGULATOR



EXAMPLE:  
MVP 20 - 1A K / 0101  
A B C D E  
P4 CONFIG. P3 CONFIG.  
REFER TO COMMON P3 EXAMPLES ON LEFT

MVP CODING TABLE					
A MODEL CODE	P4 CONFIG.	B PORT SIZE	C CONTROL MODULE RANGE	D CONNECTION SIZE	E CONNECTION STYLE
13 (1/2")	1 Shut Off	1 (1/2")	0 (Solenoid)	1 (1/2")	1 (SW)
20 (3/4")	2 HEV	0 (3/4")	1 (Range A)	0 (3/4")	2 (BW)
25 (1")	3 Stop Check/HEV	2 (1")	3 (Range B)	2 (1")	3 (ODS)
32 (1 1/4")	4 Stop Check	3 (1 1/4")		3 (1 1/4")	
40 (1 1/2")	5 Check	4 (1 1/2")		4 (1 1/2")	
50 (2")	6 Blank	5 (2")		5 (2")	
	7 MCV	A - 25% Capacity B - 50% Capacity		6 (2 1/2")	